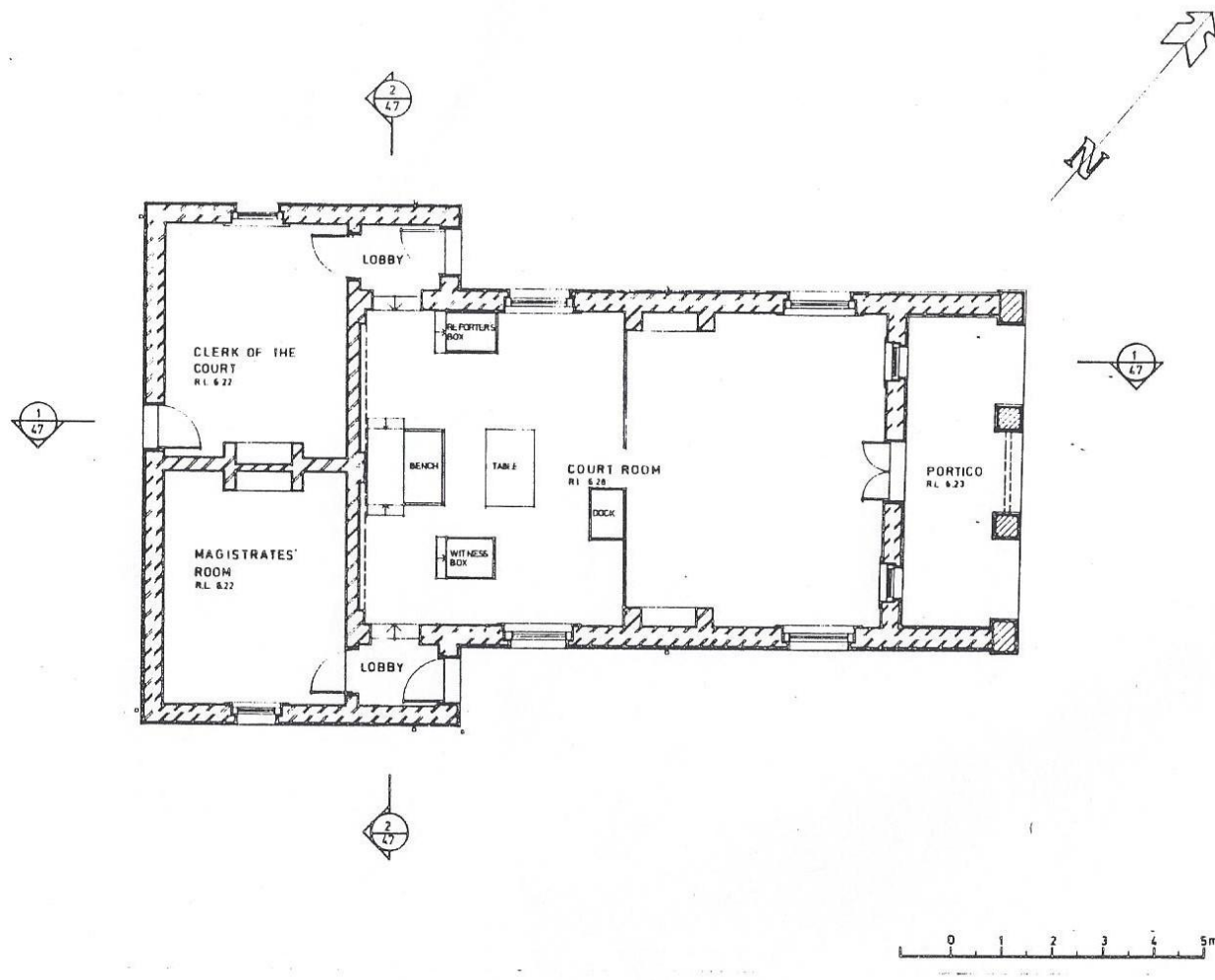
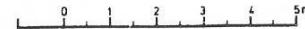
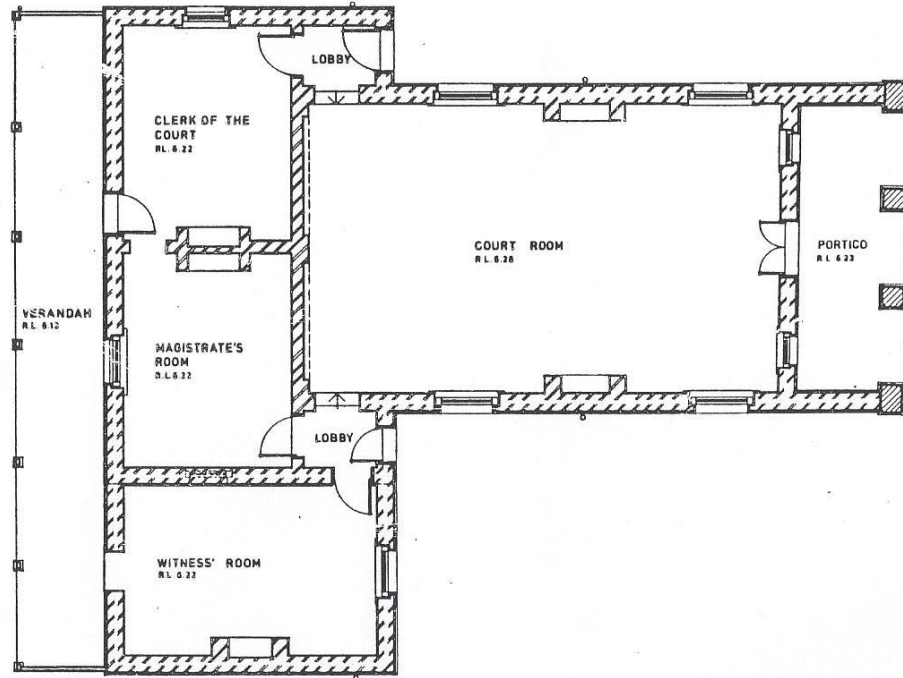
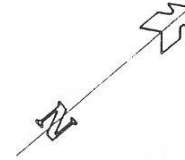
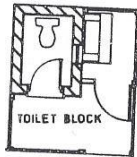


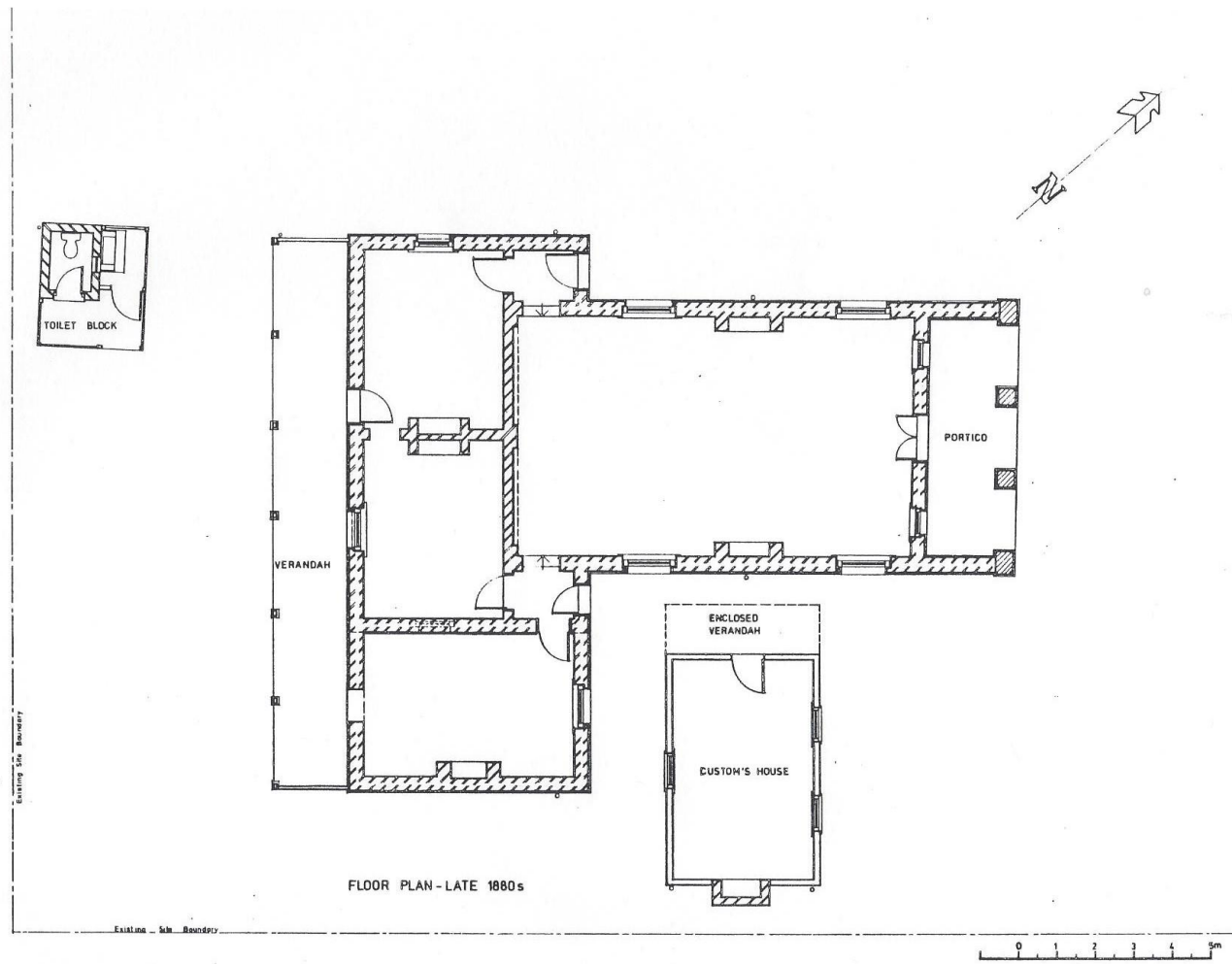
**Plans of the Old Court House Wollongong 1858 to 1987**  
**plus an archaeological plan of the changes over the period**



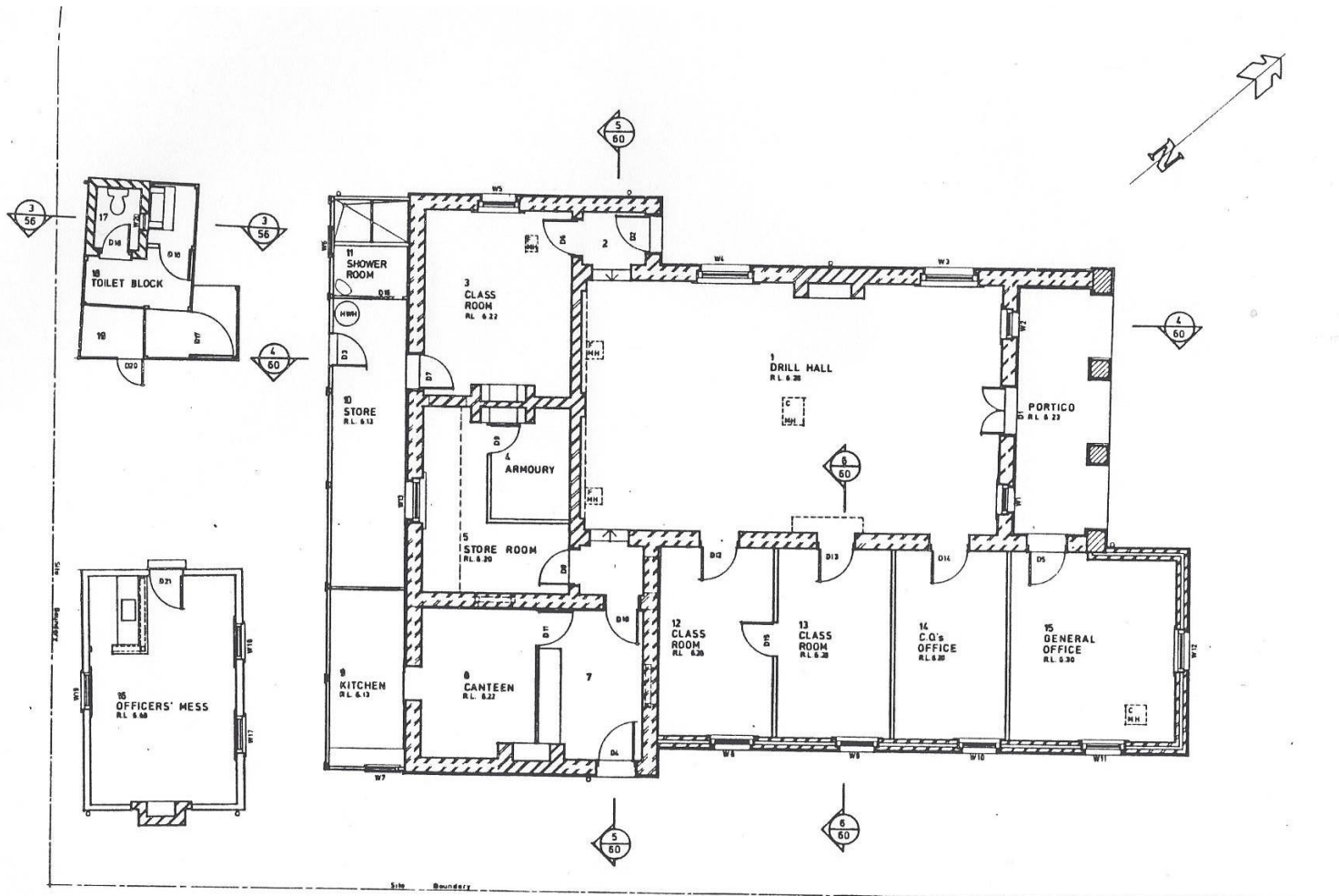
Dwg. 1 Plan of Court House as built, 1858.



Dwg. 5 Floor Plan of Court House after 1866 additions.



Dwg. 8 Plan of the Court House/Customs House - late 1880's.



FLOOR PLAN - EXISTING 1987

Dwg. 12 Floor Plans of Existing Buildings - 1987.

### Archaeological Zone 3

